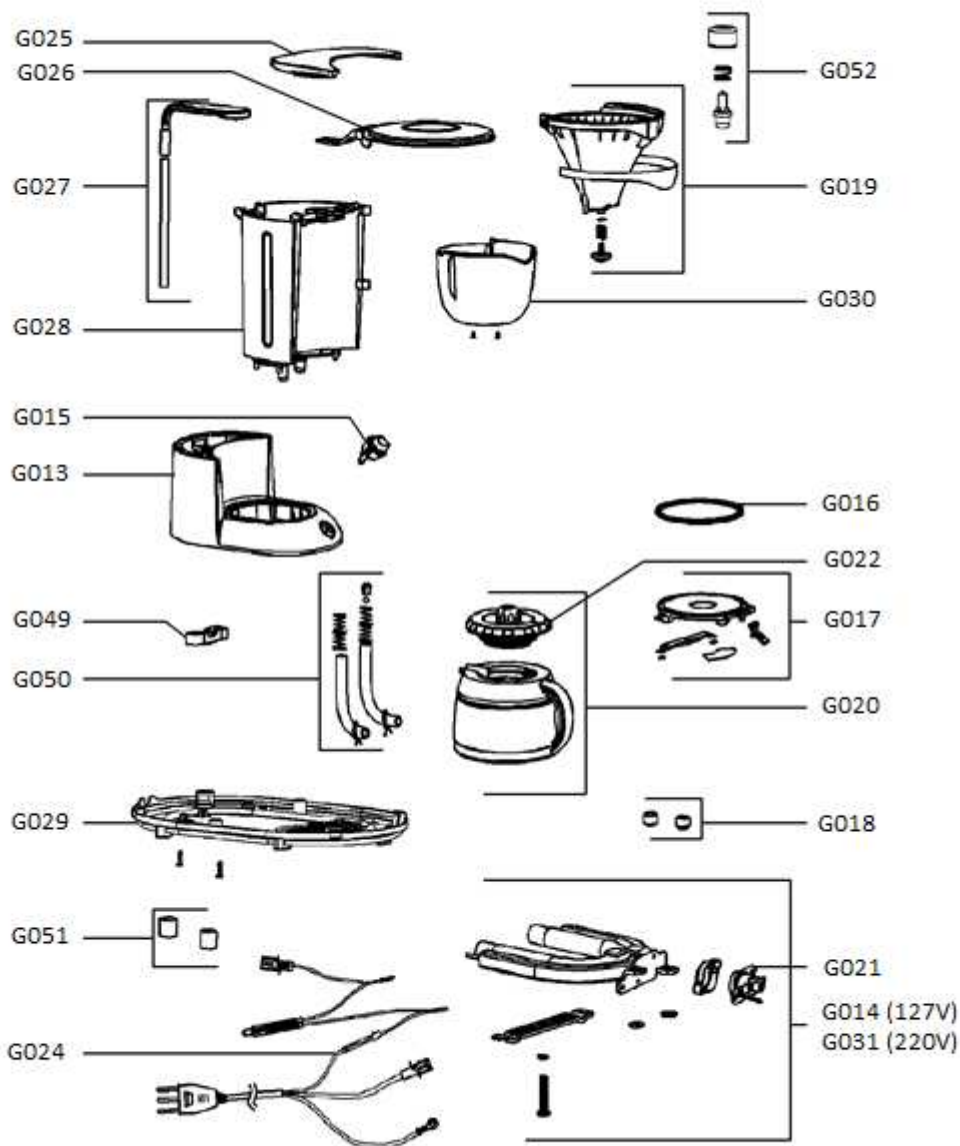


CJ4408B1 (127 V)
CJ4408B2 (220 V)



CREATION :

05/09/2014

PAGE

COUNTRY

FAMILY

EDITION :

05/09/2014

1/2

BR

27

Lista de Peças:

Código	Quant.	Descrição
G013	1	CORPO CAFX
G014	1	RESIST E FUSIVEL 127V CAFX
G015	1	INTERRUPTOR CAFX
G016	1	JUNTA CAFX
G017	1	PLACA CAFX
G018	1	DIST ISOLANTE CAFX
G019	1	PORTA FILT E VALV CAFX
G020	1	JARRA C/ TAMPA CAFX
G021	1	TERMOSTATO CAFX
G022	1	TAMPA P/JARRA CAFX
G024	1	CABO CAFX
G025	1	TAMP P/DEPOSITO CAFX
G026	1	TAMP PORT FILTRO CAFX
G027	1	DIFUSOR CAFX
G028	1	DEPOSITO CAFX
G049	1	SUP CORD PLUG CAFX
G050	1	KIT TUBOS E VALV CAFX
G029	1	FUNDO CAFX
G051	1	PE CAFX
G052	1	FECHO CAFX
G030	1	SUP/PORT FILTRO CAFX
G031	1	RESIST E FUSIVEL 220V CAFX

CREATION :	05/09/2014	PAGE	COUNTRY	FAMILY
EDITION :	05/09/2014	2/2	BR	27